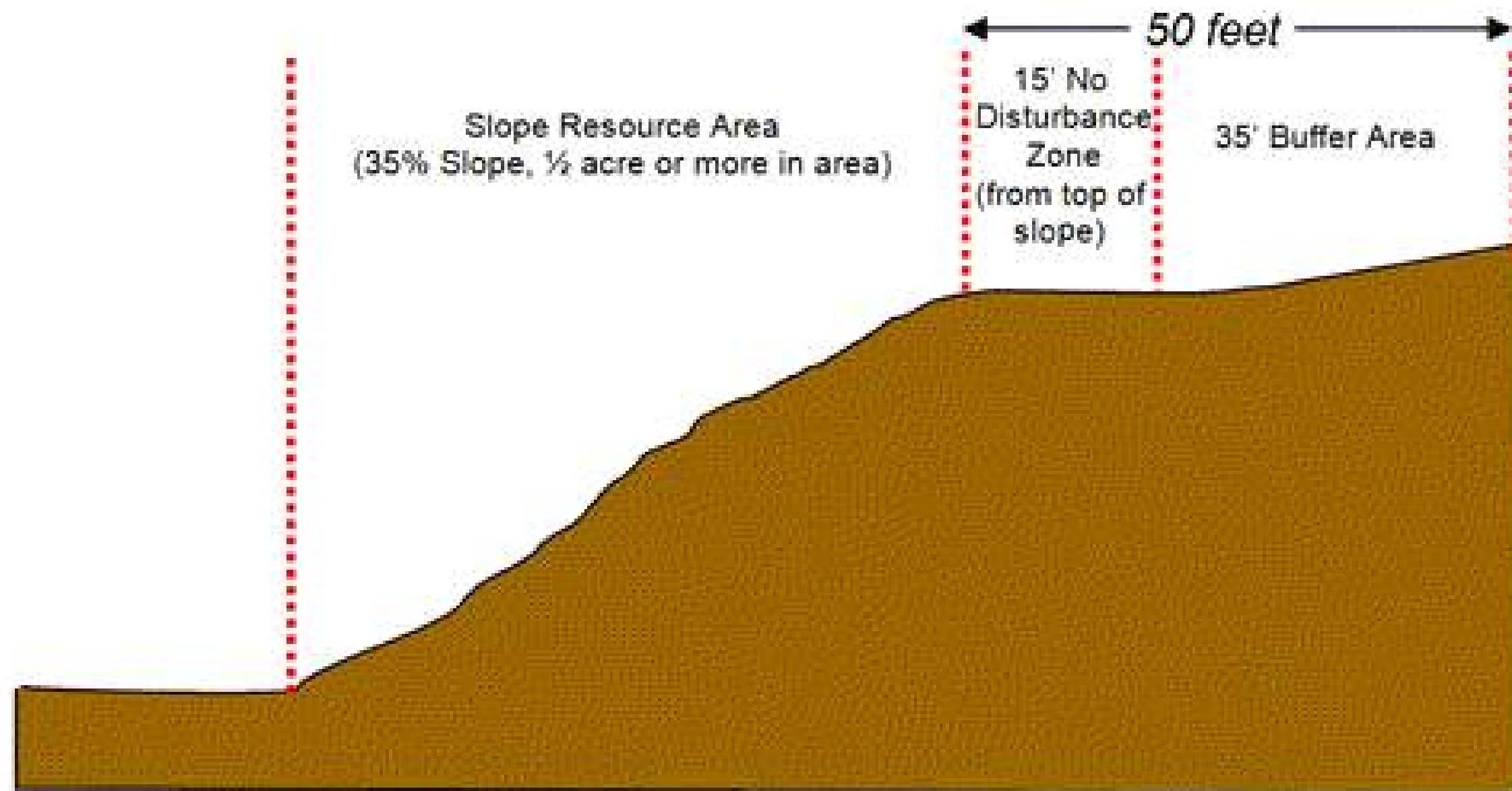


## **974 CMR 3.00 SITE PLAN**

### **3.06 Steep Slope Protection**

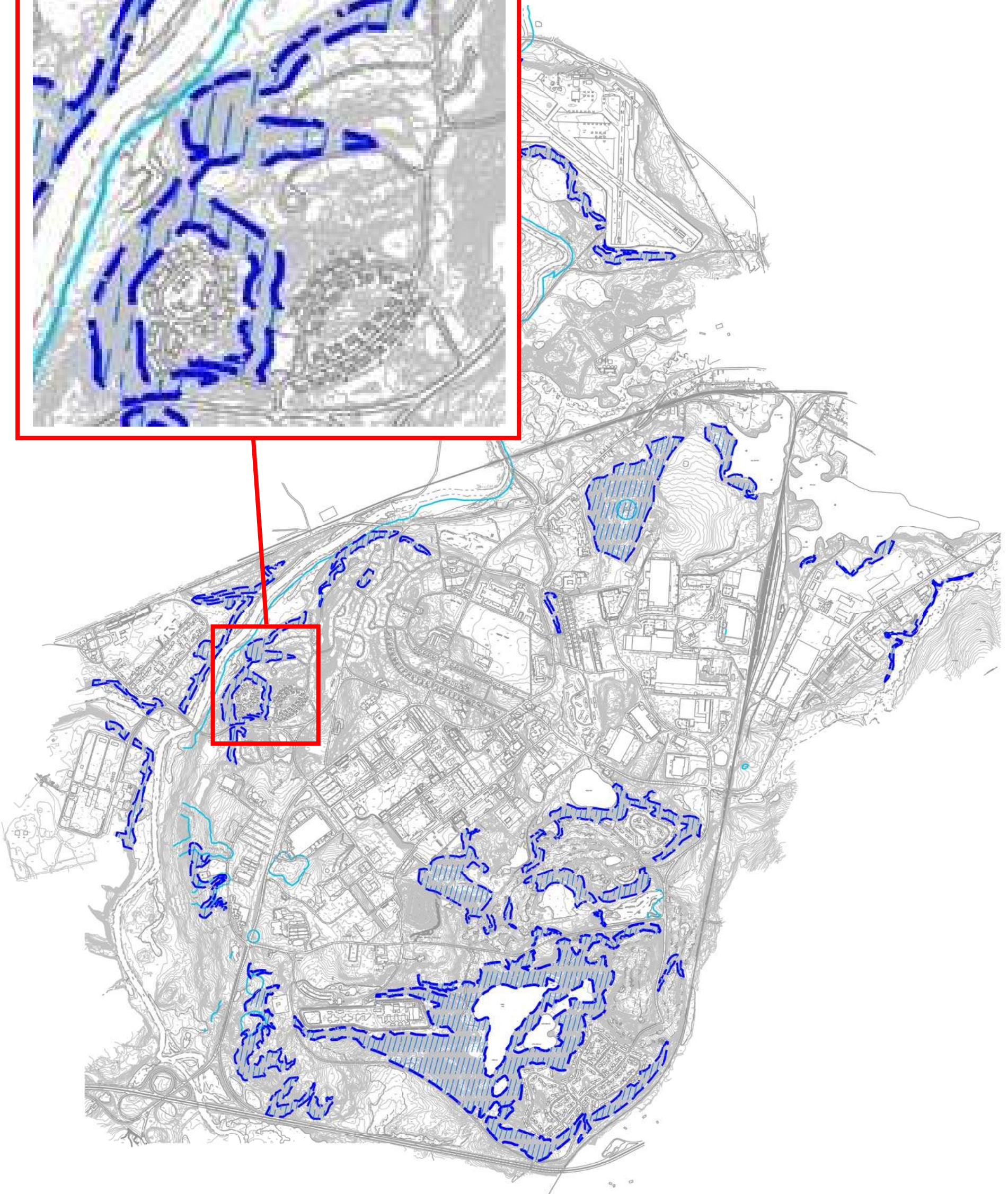
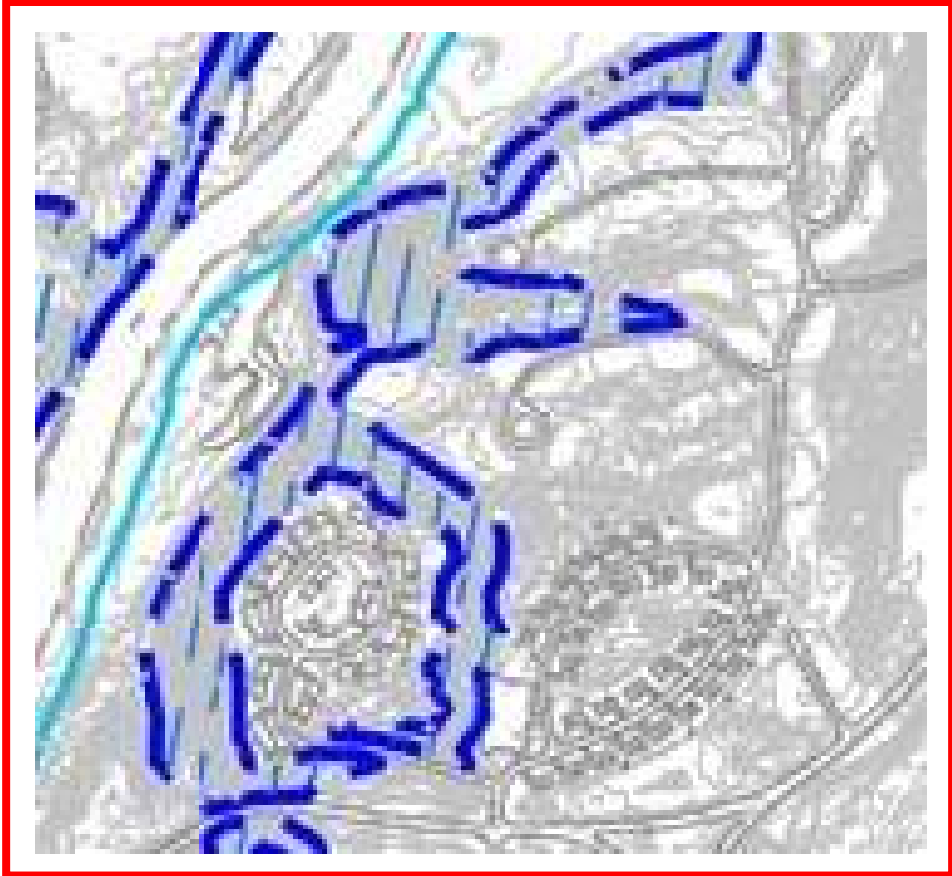
1. **Purpose.** Development on or adjacent to unique ridgelines, slopes and plateaus can have an adverse impact on:
  - (a) Water quality by causing erosion and sedimentation and changing patterns of stormwater runoff;
  - (b) Wildlife habitat and corridors; and
  - (c) Slope stability.These adverse impacts can be avoided by restricting development and mitigating its impacts.

**Slope Resource Area (SRAs):** Naturally formed, undisturbed slopes with a contiguous areas of a ½ acre or more. These areas are identified on the Devens Slope Resource Area Map in 974 CMR 3.06 Appendix B Figures (13) Figure M. Such slopes are generally in excess of 35%, with mature vegetative cover and in close proximity to sensitive resource areas and/or unique geological formations.



## **These are the 7 characteristics or qualifiers that define a SRA**

1. Naturally formed
2. Undisturbed slopes
3. Contiguous areas of a ½ acre or more.
4. Identified on the Devens Slope Resource Area Map
5. Slopes are generally in excess of 35%
6. Mature vegetative cover
7. In close proximity to sensitive resource areas and/or unique geological formations.



Slope Resource Area:  
Naturally formed, undisturbed, areas with mature vegetation cover  
Slopes generally in excess of 35%.  
Contiguous area of 1/2 Ac. or more  
In close proximity to sensitive resource areas

RESOURCE & CONSTRAINTS MAP

SLOPE RESOURCE AREA  
OVERLAY MAP

200

UNIT  
UNITED STATES OF AMERICA DEPARTMENT OF INTERIOR  
BUREAU OF LAND MANAGEMENT  
MONTANA DISTRICT OFFICE

SLOPE AREA = 9,558 SF  
(.22 AC)

SLOPE AREA = 20,515 SF  
(.47 AC)

SLOPE AREA = 1,377 SF  
(.03 AC)

CFS 4

2 STORY OFFICE

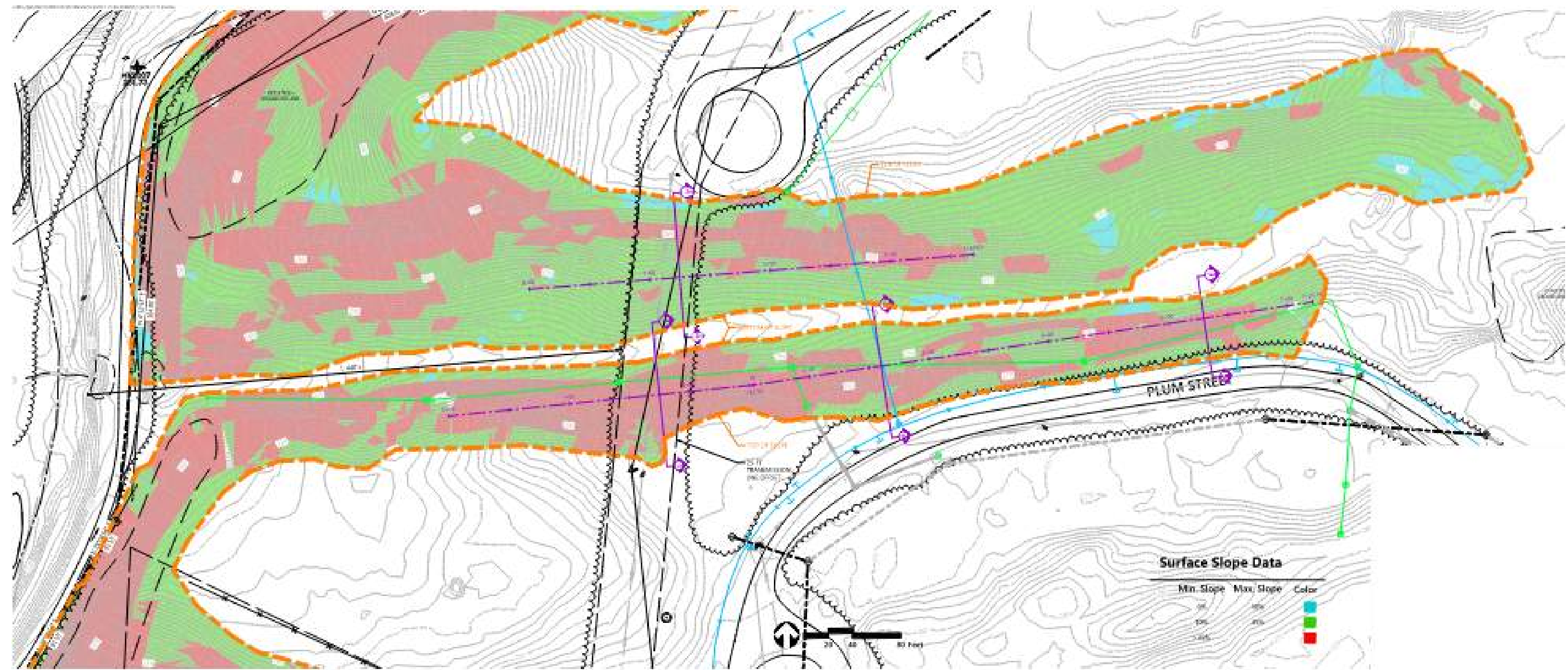
SPARC

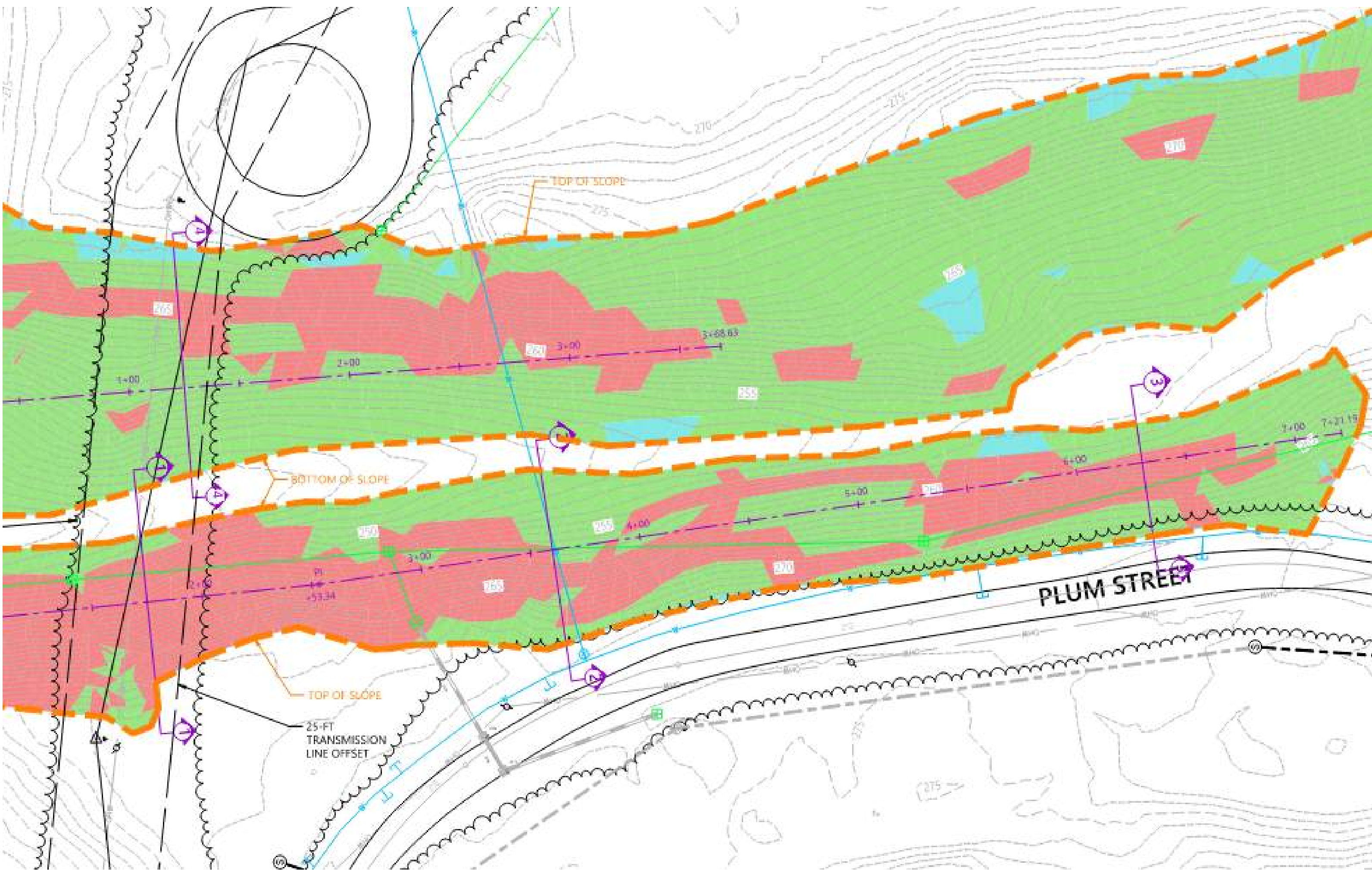
CENTRAL GREEN-CFS

CENTRAL GREEN-KSP

2 STORY OFFICE







TOP OF SCOPE

BOTTOM OF SLOPE

TOP OF SLOPE

25-FT  
TRANSMISSION  
LINE OFFSET

PLUM STREET

275

2+00

272

3+00

3+68.63

255

265

7+00

7+21.15

PI

-53.34

250

3+00

255

265

4+00

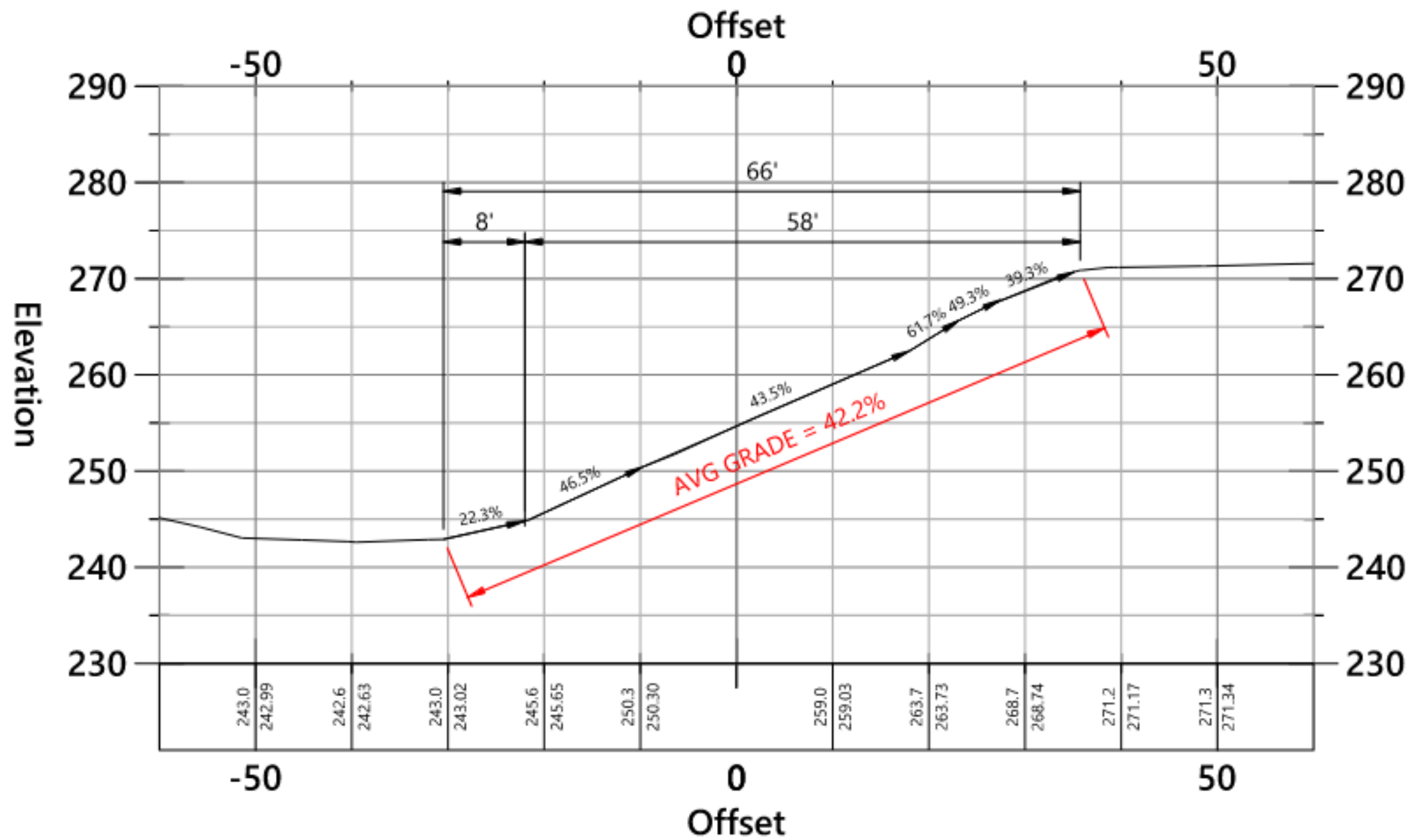
270

5+00

270

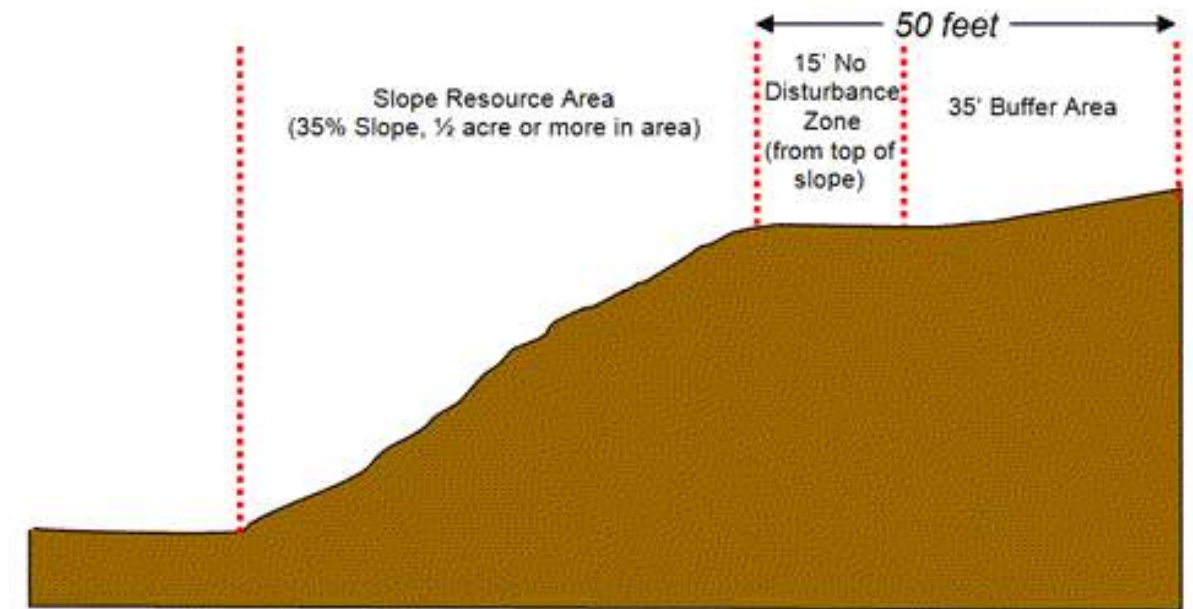
6+00

275

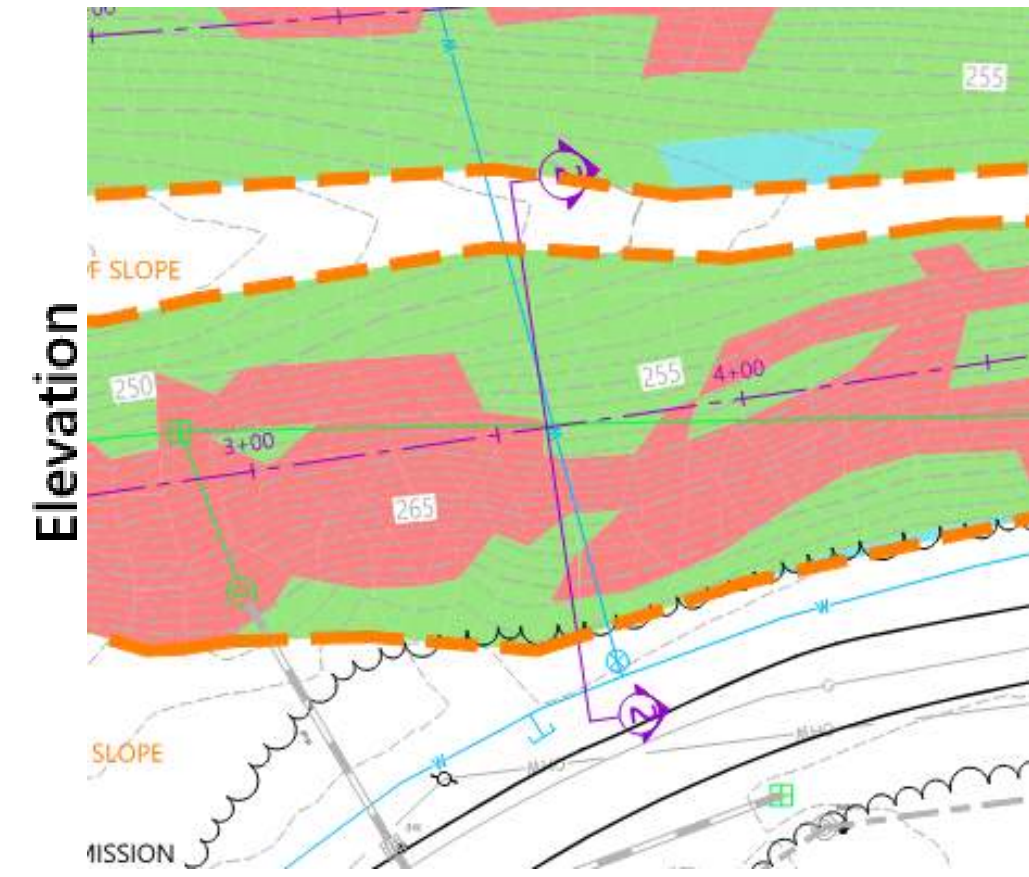
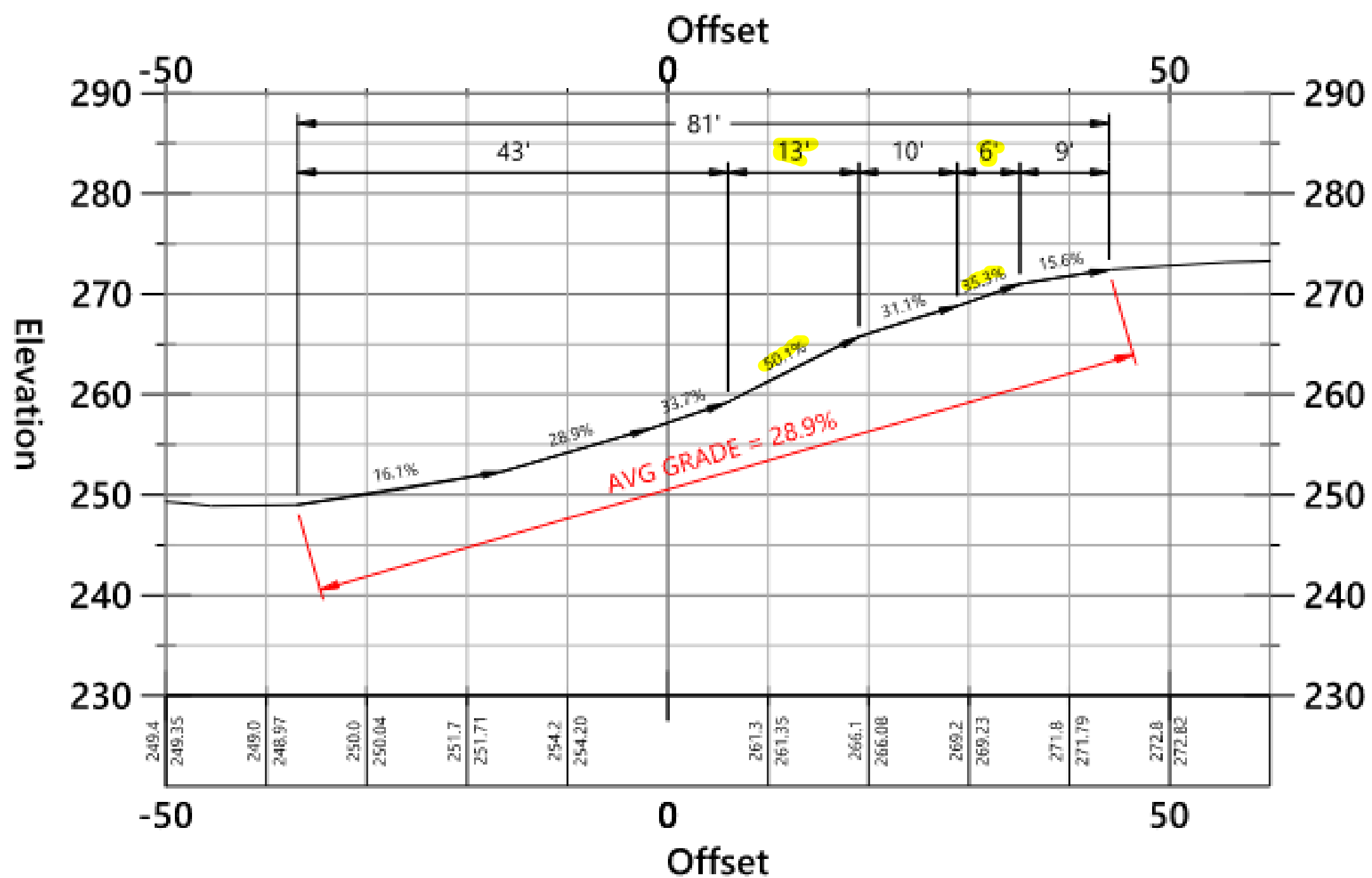


### SECTION 1

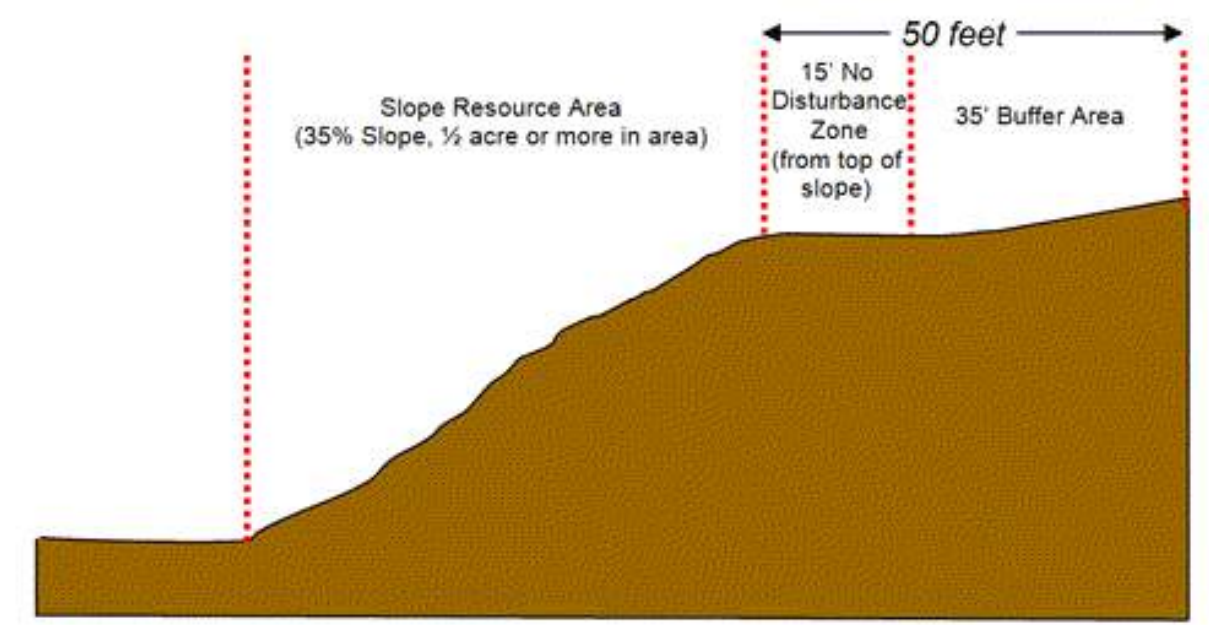
MIDDLE FINGER SRA - SOUTHERN SLOPE  
 58 FT OF 66 FT (88%) EXCEEDING 35% SLOPE

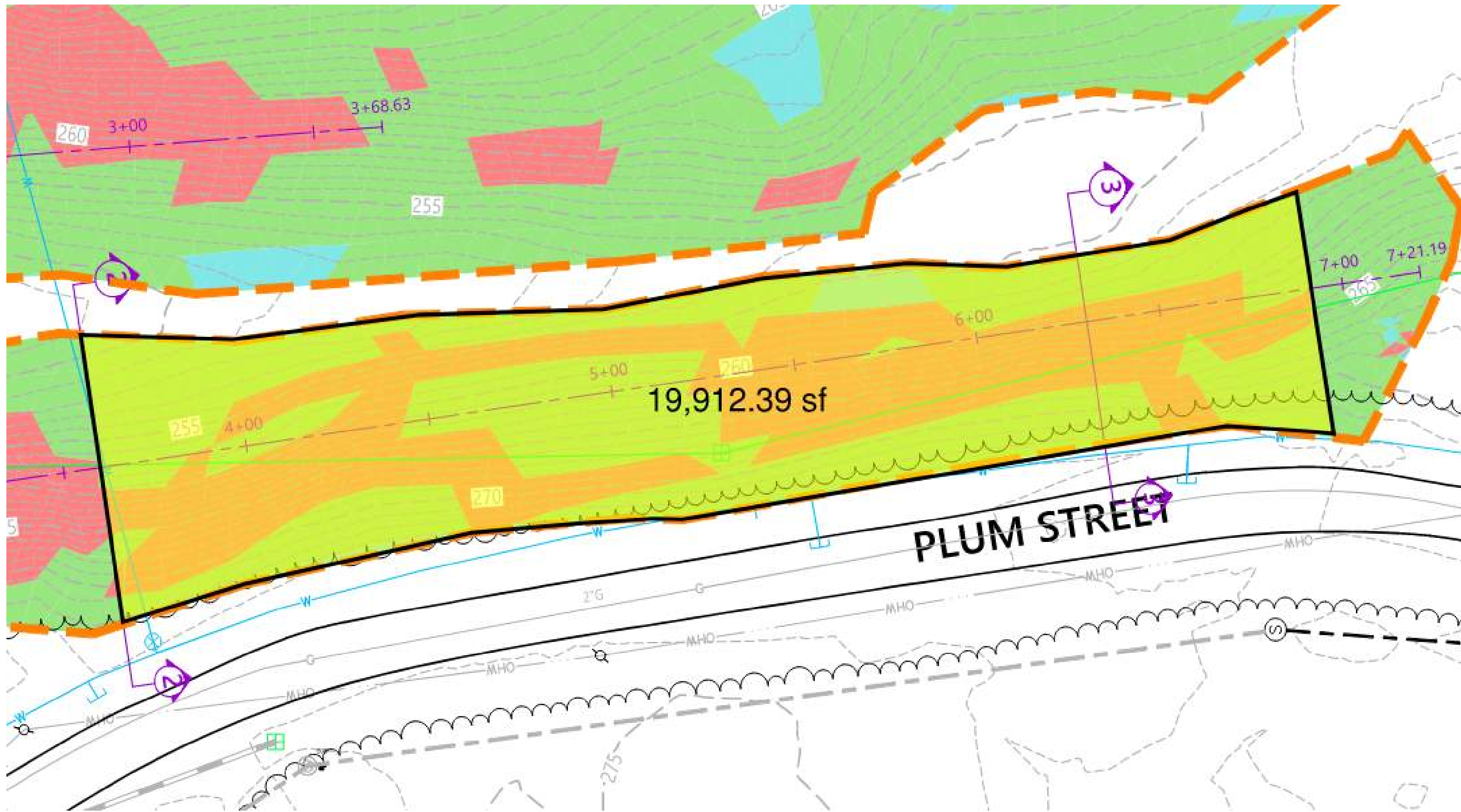






MIDDLE FINGER SRA - SOUTHERN SLOPE  
 19 FT OF 81 FT (24%) EXCEEDING 35% SLOPE



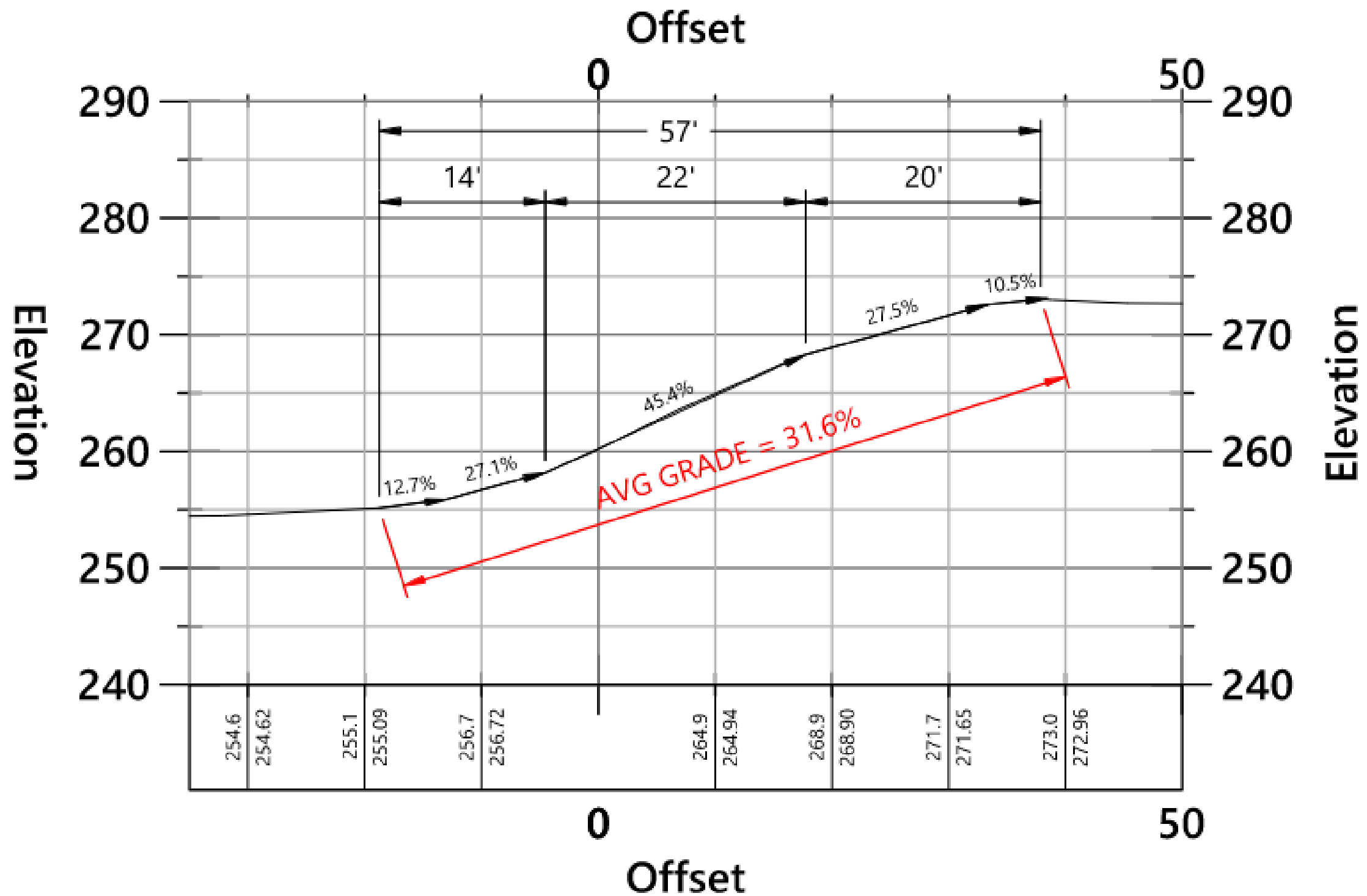




650'±

625'±

APPROXIMATE LOCATION OF EXISTING CART PATH

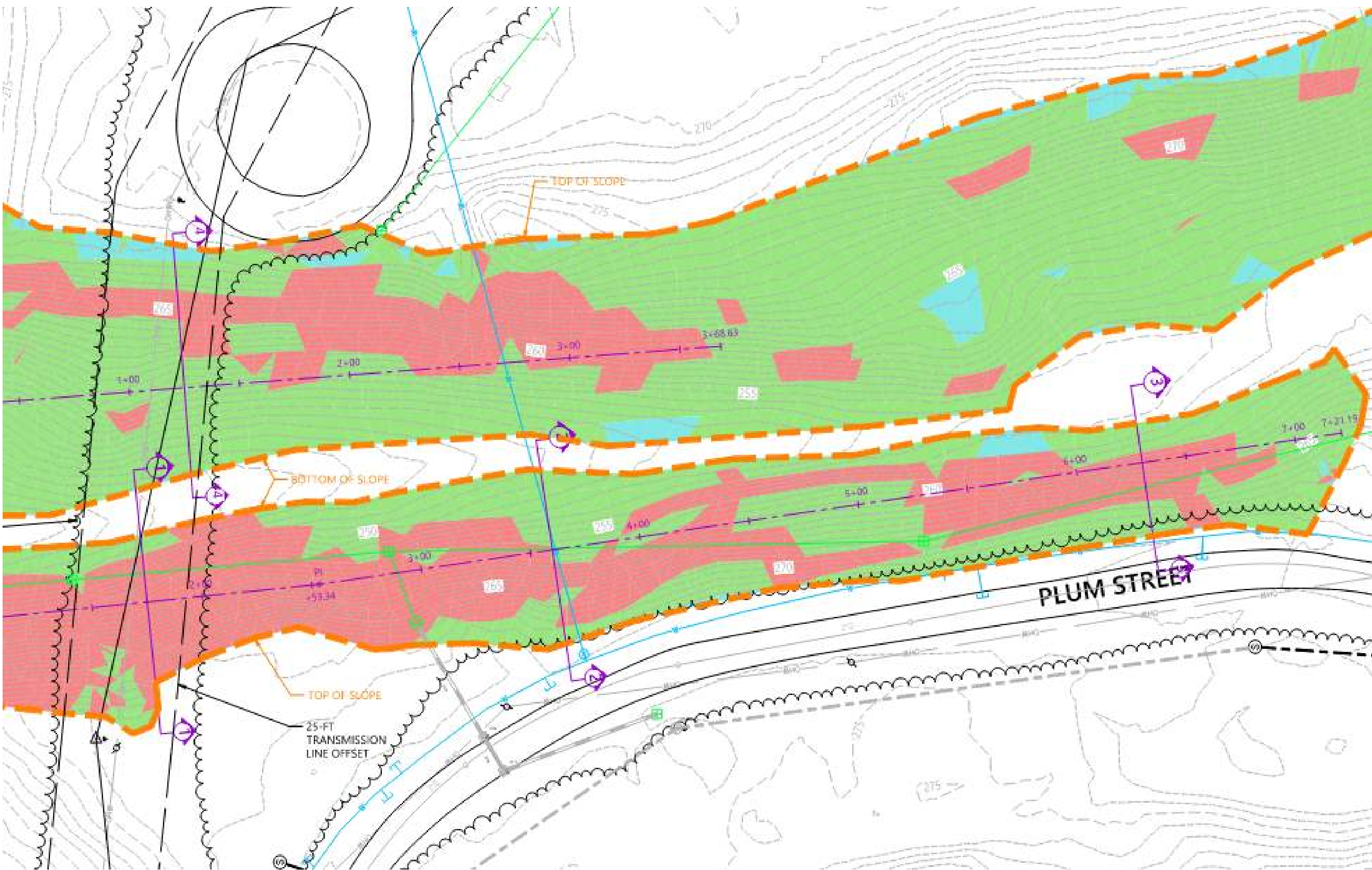


### SECTION 3

MIDDLE FINGER SRA - SOUTHERN SLOPE  
 22 FT OF 57 FT (39%) EXCEEDING 35% SLOPE

## These are the 7 characteristics or qualifiers that define a SRA

1. Naturally formed - YES
2. Undisturbed slopes – Yes, except for utility crossings
3. Contiguous areas of a ½ acre or more. - NO
4. Identified on the Devens Slope Resource Area Map - YES
5. Slopes are generally in excess of 35% - NO
6. Mature vegetative cover - YES
7. In close proximity to sensitive resource areas and/or unique geological formations. - NO



TOP OF SLOPE

BOTTOM OF SLOPE

TOP OF SLOPE

25-FT  
TRANSMISSION  
LINE OFFSET

PLUM STREET

275

2+00

3+00

3+68.63

255

5+00

6+00

7+00

7+00

7+21.15

1

2

3

4

5

6

7

8

9

275

270

275

265

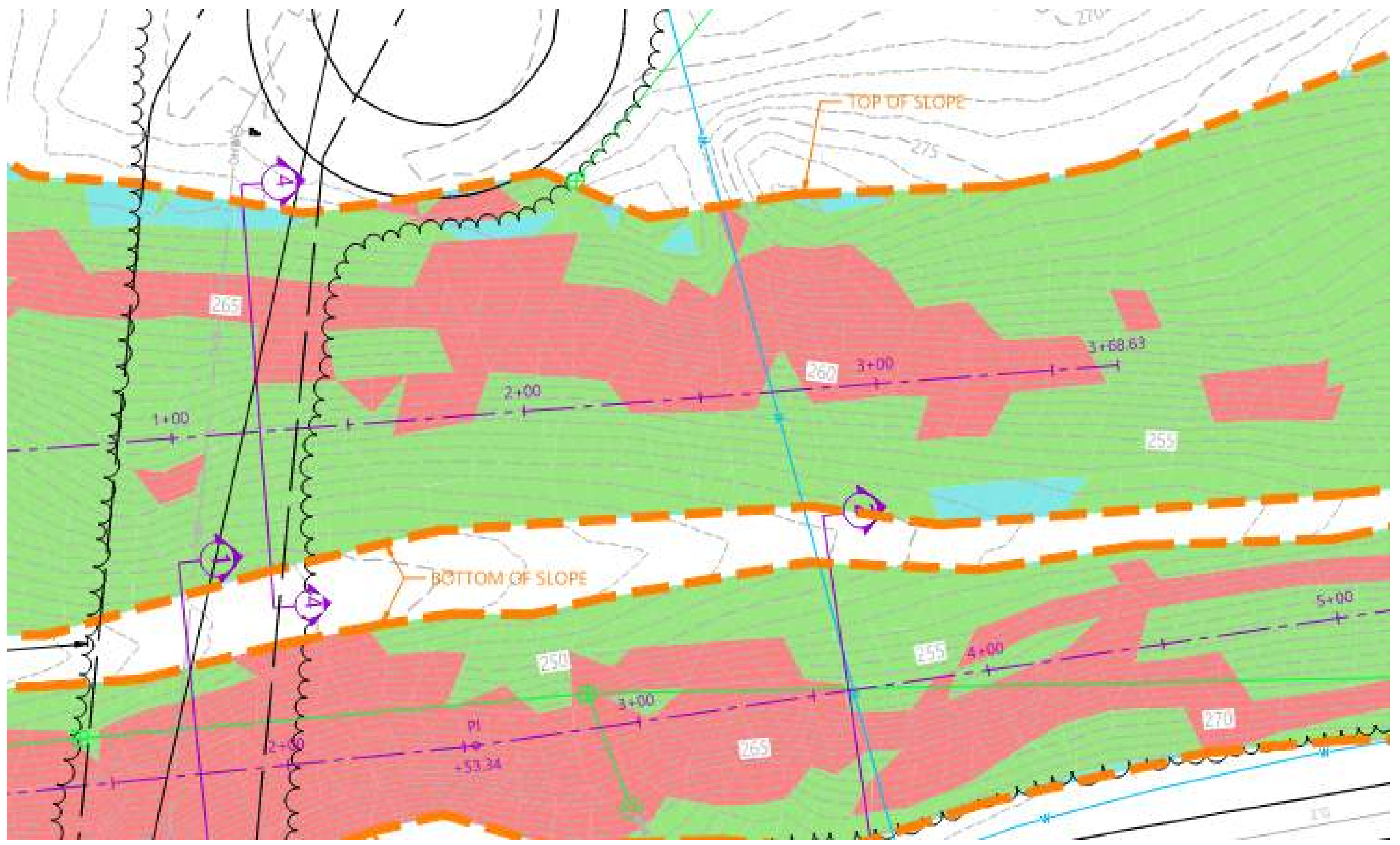
250

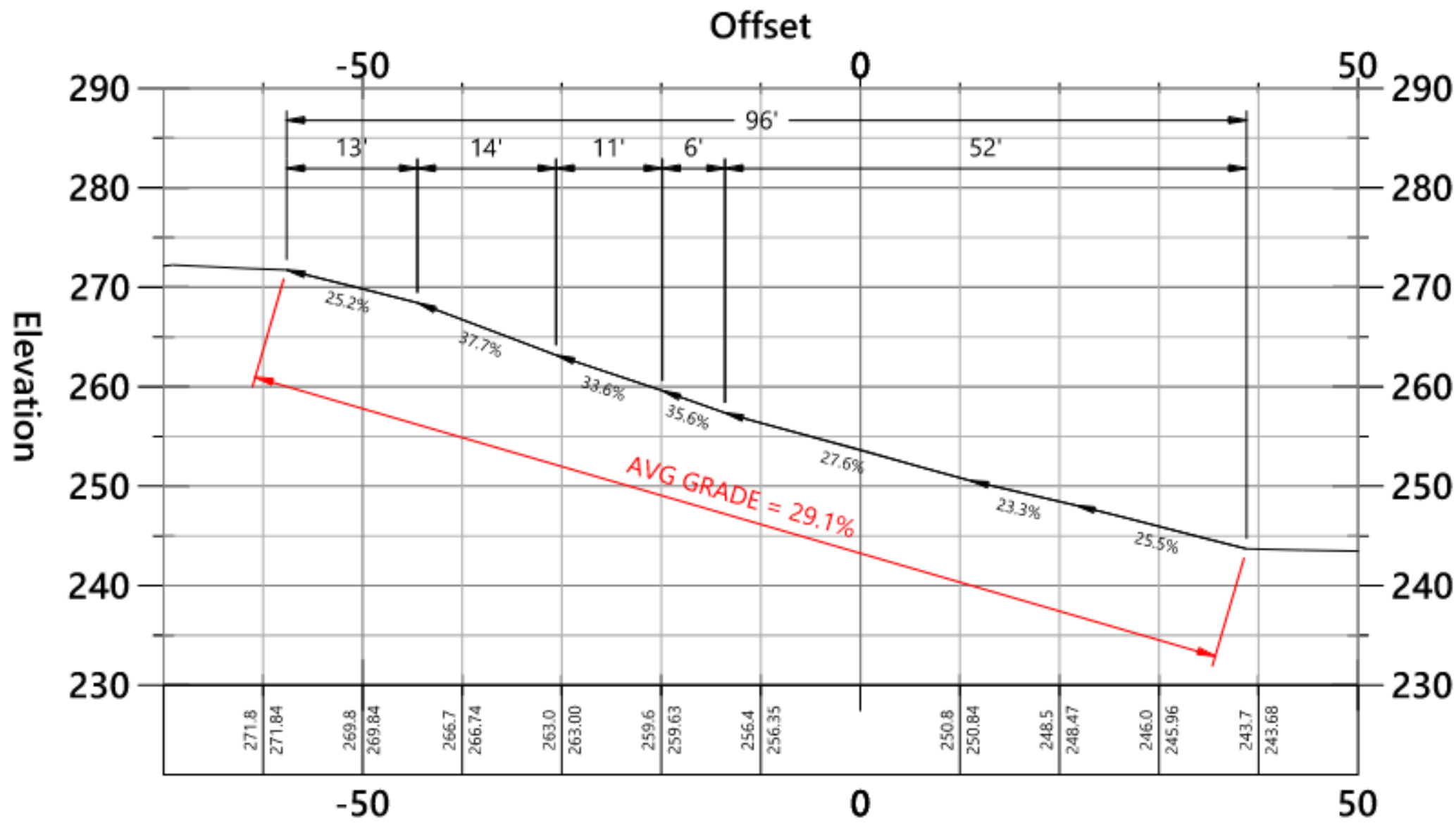
255

270

275

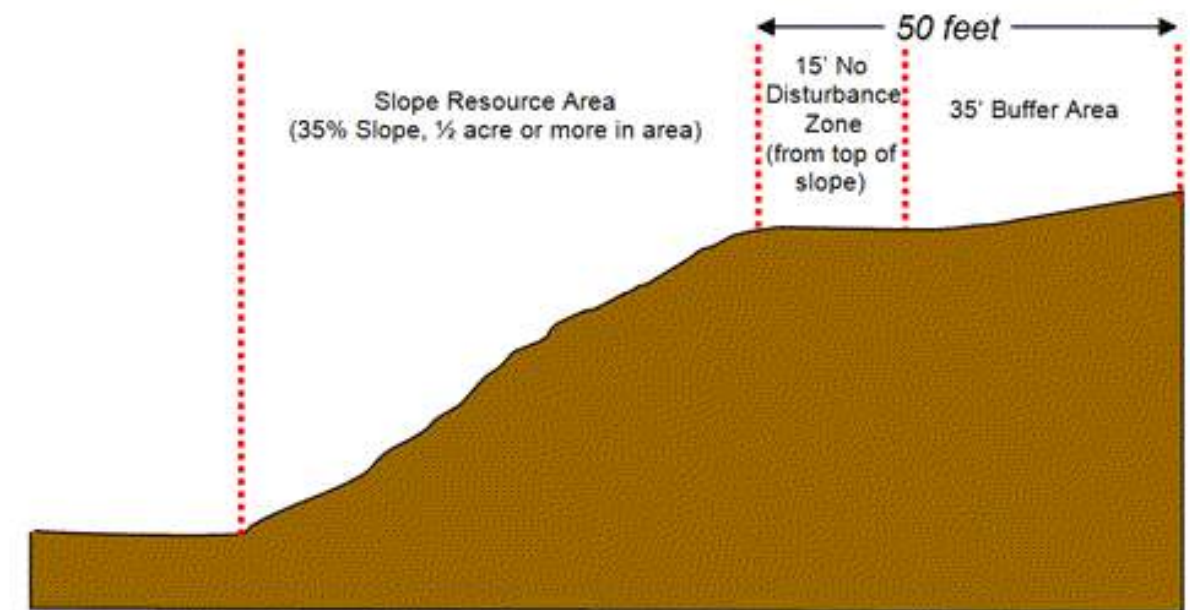
270



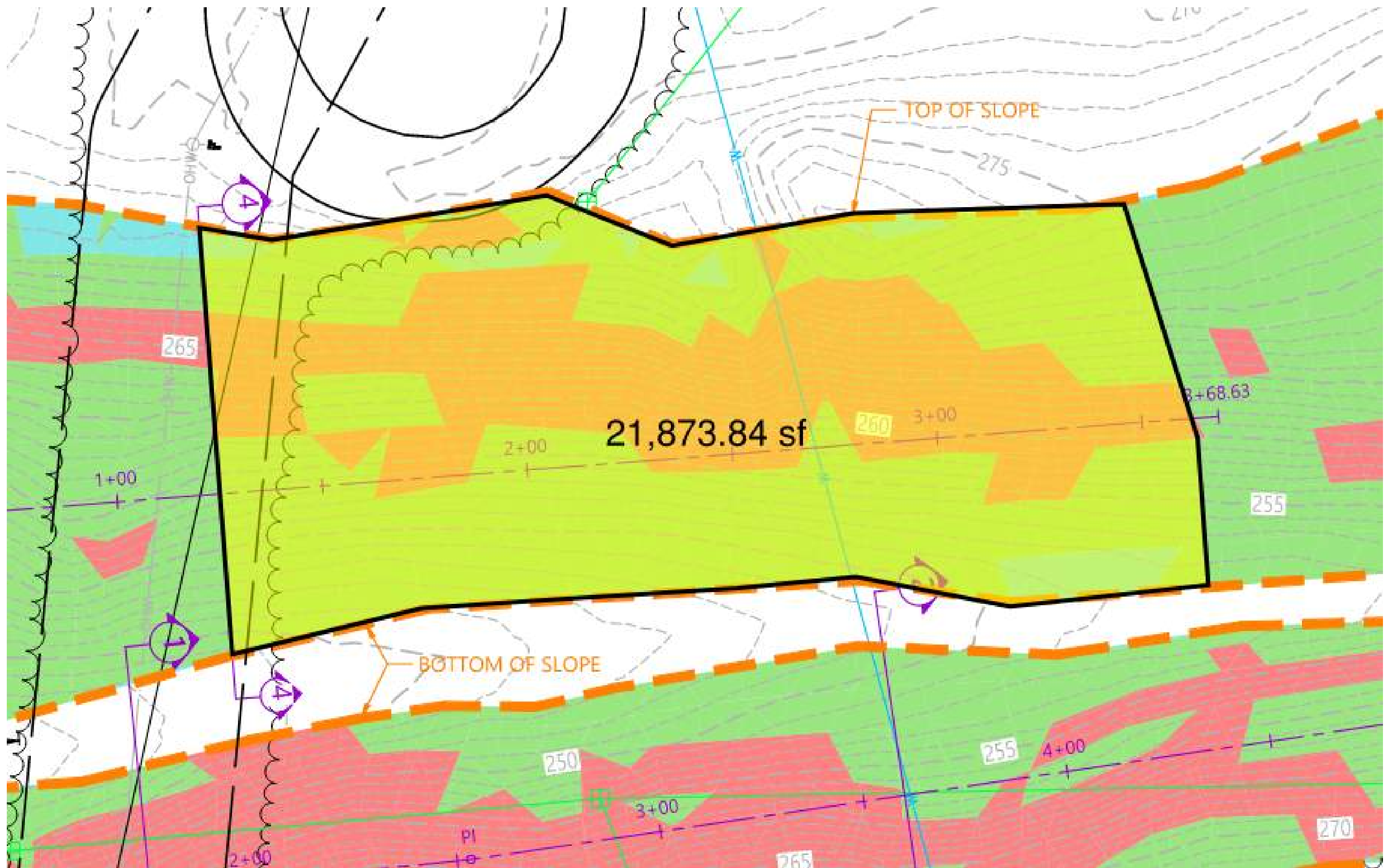


### SECTION 4

NORTHERN FINGER SRA - NORTHERN SLOPE  
 20 FT OF 96 FT(21%) EXCEEDING 35% SLOPE









650'±

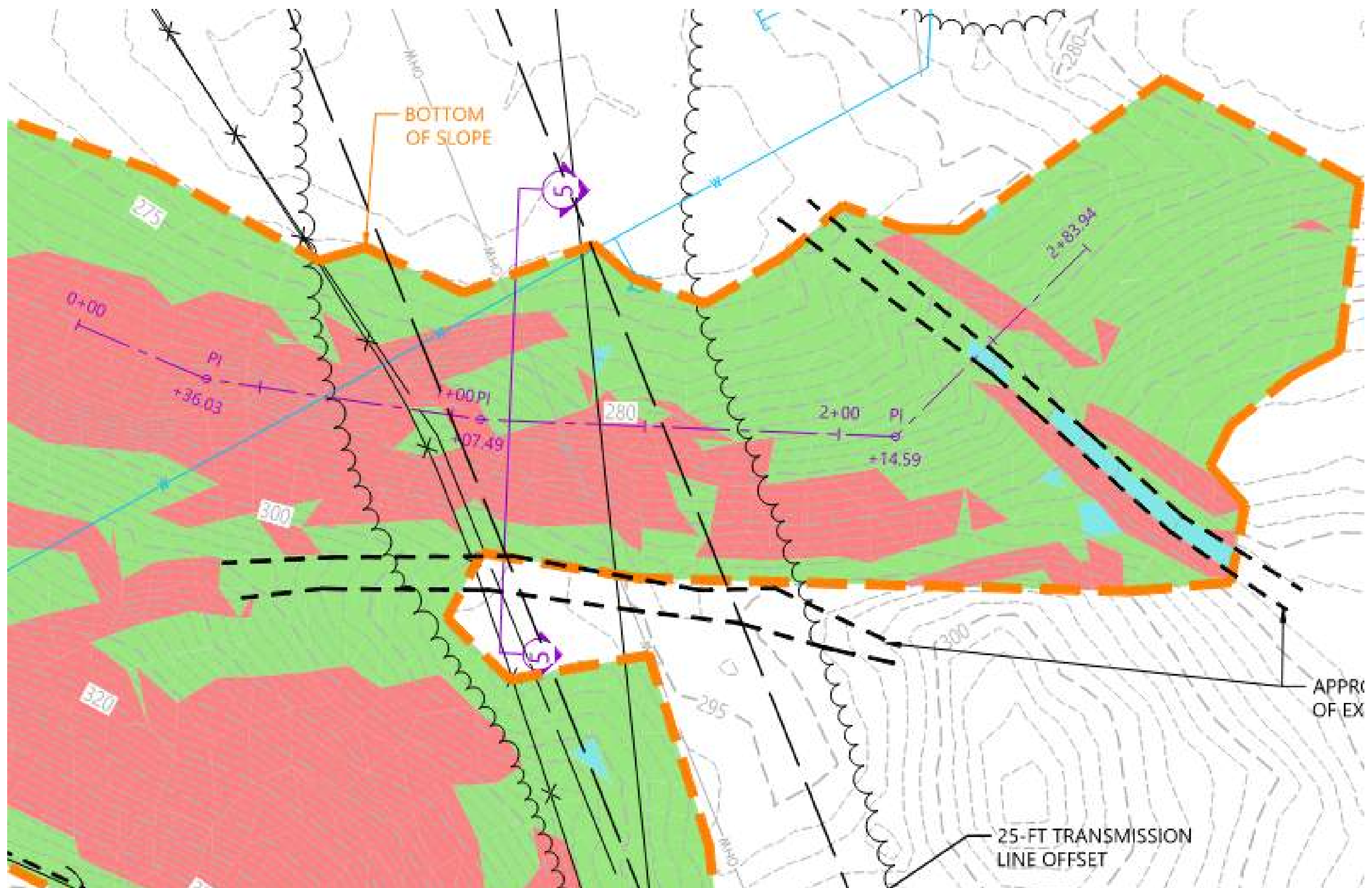
625'±

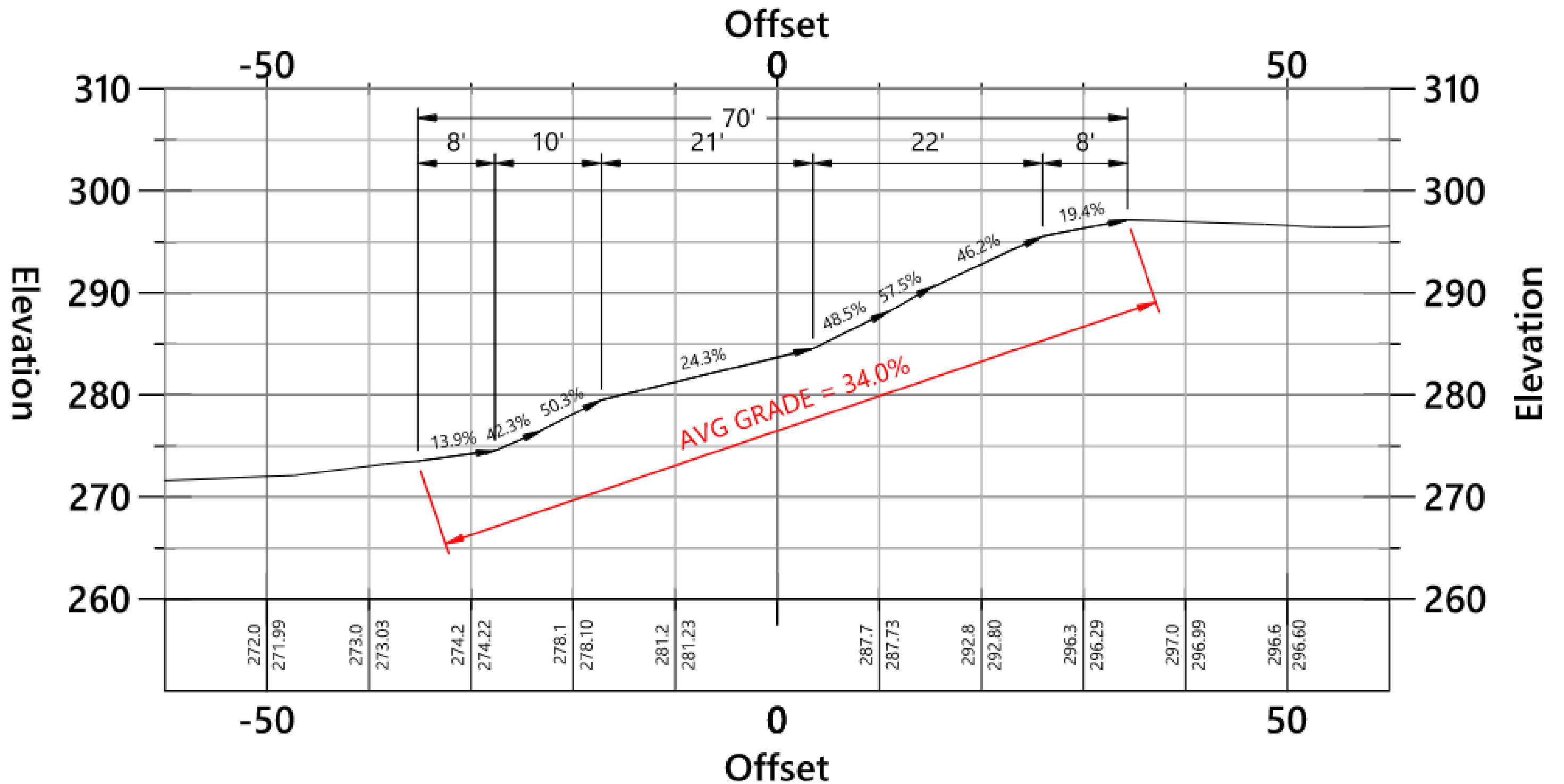
APPROXIMATE LOCATION OF EXISTING CART PATH

## These are the 7 characteristics or qualifiers that define a SRA

1. Naturally formed - YES
2. Undisturbed slopes – Yes, except for utility crossings
3. Contiguous areas of a ½ acre or more. - NO
4. Identified on the Devens Slope Resource Area Map - YES
5. Slopes are generally in excess of 35% - NO
6. Mature vegetative cover - YES
7. In close proximity to sensitive resource areas and/or unique geological formations. - NO



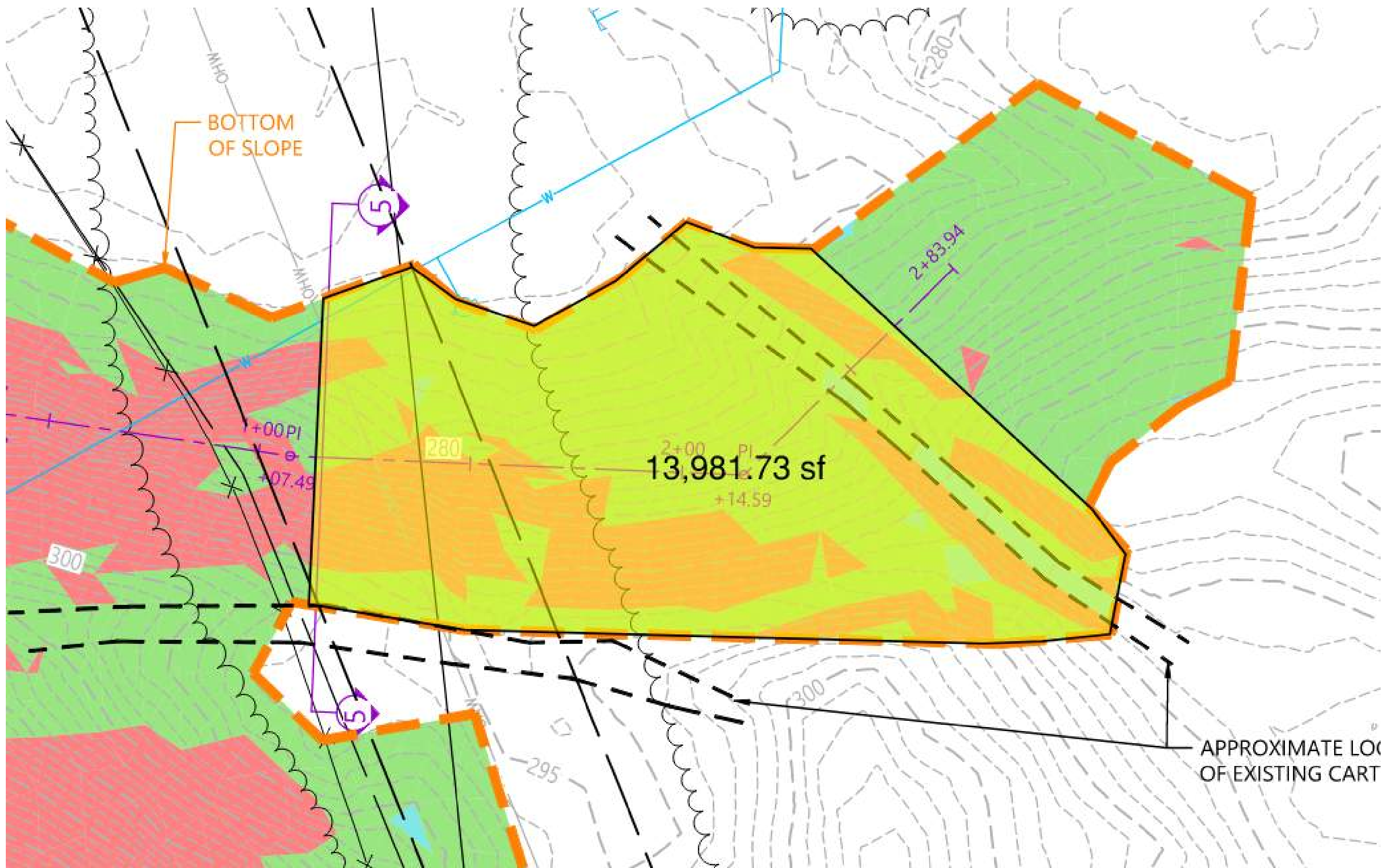


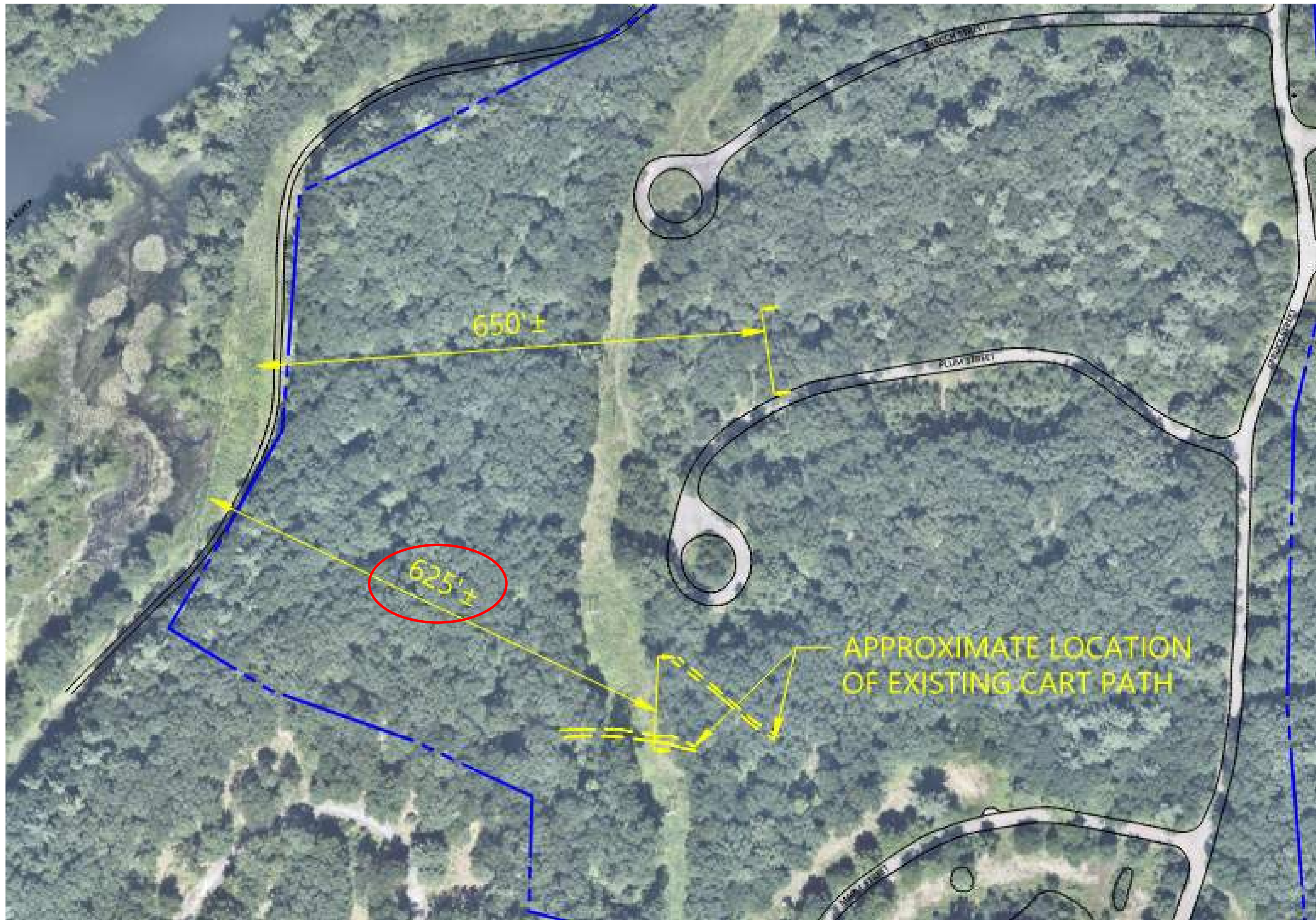


## SECTION 5

SOUTHERN FINGER SRA

32 FT OF 70 FT (46%) EXCEEDING 35% SLOPE







## These are the 7 characteristics or qualifiers that define a SRA

1. Naturally formed - YES
2. Undisturbed slopes – Yes, except for utility crossings
3. Contiguous areas of a ½ acre or more. - NO
4. Identified on the Devens Slope Resource Area Map - NO
5. Slopes are generally in excess of 35% - NO
6. Mature vegetative cover - YES
7. In close proximity to sensitive resource areas and/or unique geological formations. - NO